

STEP

Status and Trends of European Pollinators



STEP

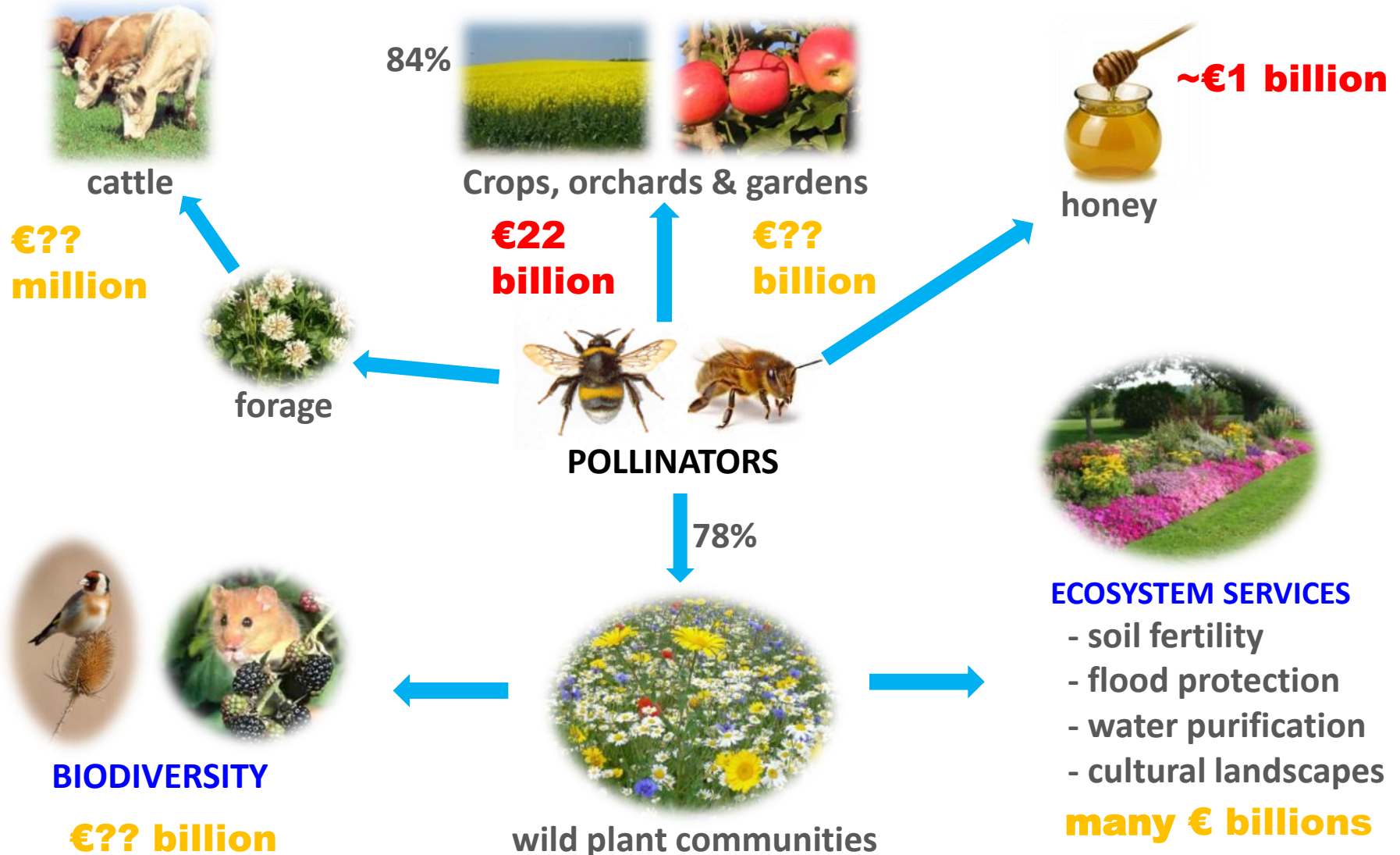
Lyubomir Penev
WP7 Dissemination and
communication



Multiple values to society

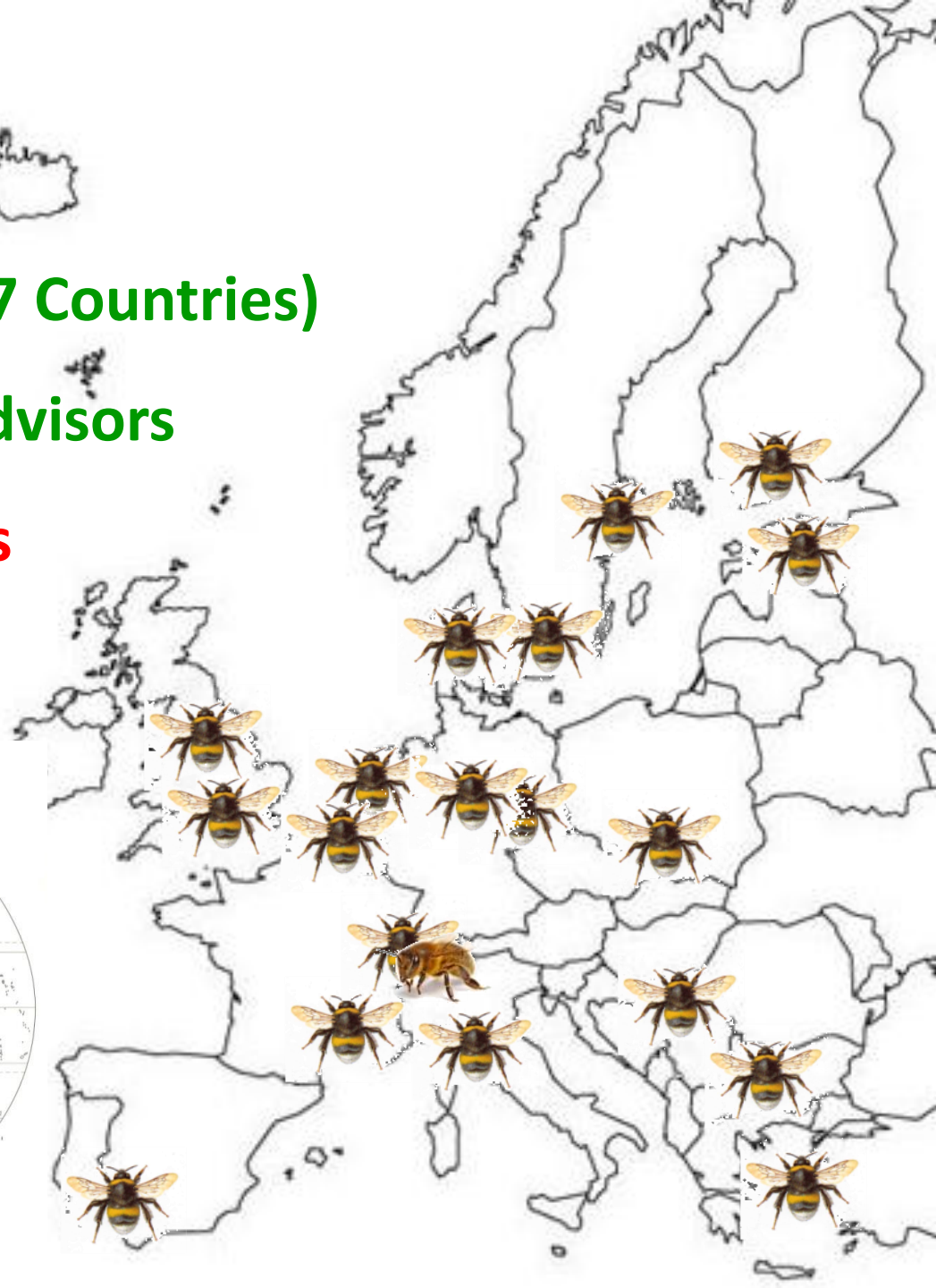
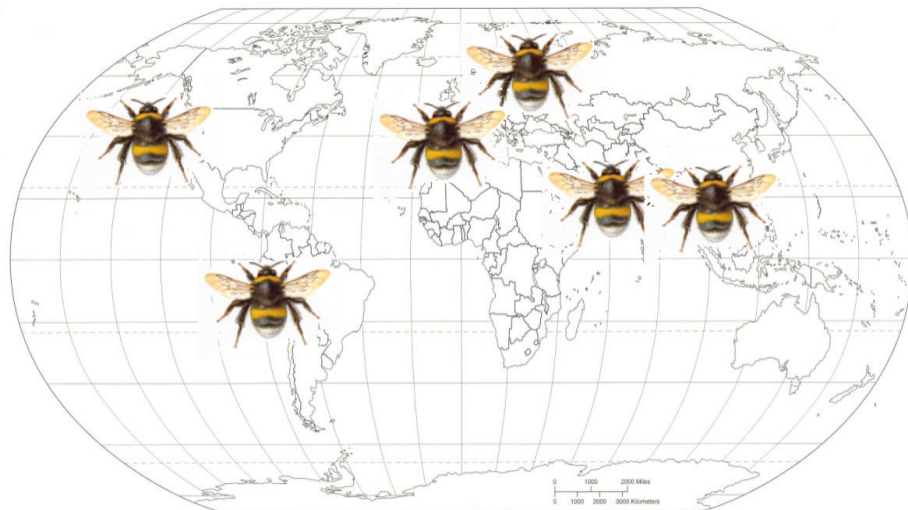


FOOD SECURITY, CONSUMER CHOICE & HEALTHY DIET



What is STEP?

- 22 European Partners (17 Countries)
- 4 BRIC partners plus 2 Advisors
- €3.5M plus contributions
- 2010 - 2015



STEP: Key objectives



- 1st European **Red Data Book** for bees
- Quantify the effects of **multiple pressures** on pollinators and plants
- Understand the **ecological** and **economic** impacts of pollinator loss
- **Toolkit of interventions** to conserve and manage pollinators and services
- Develop clear **policy and management recommendations**



Synergies with EU BON



2.1.6 Management of data

All beneficiaries will ensure that protocols and plans for data collection are in line with Community data policy. Beneficiaries will adhere to their institutional 'Quality Assurance of Research' or equivalent code for good practice in research.

Data will be compiled using common data standards (in line with Darwin Core) and meta-data will be produced for any significant datasets generated within the project. Meta-data will be made publically available online via the STEP online project page within 12 months of the completion of the compilation of the raw data. Availability of raw data will be restricted to a group specified by the consortium. Overall data management of the project will be coordinated by Reading and UFZ.

All datasets will be archived by the host institution responsible for producing them and also on the STEP communication platform. Datasets will be made available to the Commission and consortium for at least 5 years after the project has finished. The STEP online library will archive project reports and publications and be maintained for at least 5 years after project completion.



Synergies with EU BON



STEP large scale data sets that could be used by EU BON and the European Biodiversity Portal:

- Pan-European high-resolution database on pollinator and plants traits and environmental pressures
- European Red Data Book for endangered bees
- Climatic Risk Atlas of the Bees of Europe
- Pan-European distributional atlas of Bombus bees (digital maps)



Synergies with EU BON



STEP will develop a pollinator monitoring scheme
to assess future change at European scale



Synergies with EU BON



European distributional database for wild bees and hoverflies to from:

- Detailed local studies
- National databases (including those compiled by amateur schemes and societies)



Acknowledgements



STEP partners:



European Commission
www.STEP-project.net

